

New Melones Lake
Marina

New Melones Lake Marina
P. O. Box 1085
Angels Camp, CA

Phone 209-785-3300
www.houseboats.com

Eclipse Operating Manual



Table of Contents

INTRODUCTION.....	4
1. HOUSEBOAT OPERATION.....	4
1.1 PREPARATION BEFORE STARTING	4
1.2 ENGINE STARTING PROCEDURES	4
1.3 MAIN CONTROL CONSOLE – LOWER HELM	6
1.4 FLYING BRIDGE CONTROLS – UPPER HELM	11
2. MANEUVERING THE HOUSEBOAT	12
2.1 STEERING YOUR HOUSEBOAT	12
2.2 BEACHING	13
2.3 LEAVING AND RETURNING TO THE MARINA.....	15
2.4 STORM PROCEDURES.....	15
2.5 PROPELLER DAMAGE	16
3. APPLIANCES	16
3.1 REFRIGERATOR (PROPANE).....	16
3.2 STOVE & OVEN (PROPANE).....	18
3.3 HOT WATER HEATER	18
3.4 HEATER/FURNACE.....	19
3.5 BBQ.....	20
4. WATER SUPPLY	21
4.1 FRESH WATER.....	21
4.2 LAKE WATER	21
4.3 WATER FOR SLIDE	22
5. BATHROOM FACILITY	22
5.1 TOILET	22
5.2 CHEMICALS	22
5.3 TOILET PAPER.....	23
5.4 SHOWER	23
6.ELECTRICAL SYSTEM & COMPONENTS	23
6.1 BATTERIES.....	23
6.2 110 VOLT MAIN BREAKER BOX	23
6.3 LIGHT SWITCHES.....	24
6.4 FLYBRIDGE CASSETTE STEREO	24
6.5 CD PLAYER/STEREO	24
6.6 TV/VCR	24
6.7 GENERATOR POWER	24
6.8 MICROWAVE, TRASH COMPACTOR, DISHWASHER.....	25
6.9 INVERTER SYSTEM.....	26
6.10 AIR CONDITIONING	26
7. HOT TUB.....	26

7.1 FILLING & DRAINING	26
7.2 HOT TUB HEATING & OPERATION	27
8. NEW MELONES LAKE	29
8.1 MAP OF NEW MELONES LAKE.....	29
8.2 RECOMMENDED BEACHING SITES	29
8.3 BEACHES NOT RECOMMENDED	30
8.4 NEW MELONES RULES & REGULATIONS	30
8.5 POINTS OF INTEREST.....	30
8.6 FOOD SERVICE, STORE, & FUEL.....	30
9. SAFETY EQUIPMENT AND SAFE BOATING PRACTICES	31
9.1 DRINKING & BOATING.....	31
9.2 LIFE JACKETS	31
9.3 SAFE BOATING PRACTICES	32
9.4 BOATING TERMS & KEYS TO DEFINITIONS	32
10. FIRST AID & EMERGENCY PROCEDURES.....	33
11. RETURNING TO THE MARINA.....	33
11.1 APPROACHING THE MARINA UPON RETURN	33
12. TROUBLE SHOOTING & SERVICE NEEDS	34
12.1 IF SERVICE IS NEEDED	34
12.2 TROUBLE SHOOTING.....	34
13. ADDENDUM	39
13.1 HOT TUB - TYPE B	39

INTRODUCTION

Welcome to your houseboat vacation with New Melones Lake Marina! This manual has been provided to you, the customer, to help you operate all of the components on your vessel safely and effectively.

Your rental vessel is a Twin Anchors Marine “Cruise Craft.” It is 56’ in length (including the swim step) and 23’ high, with a width of nearly 14 ½ feet. It is powered by a Volvo 3.0 sterndrive engine. The draft is 22” to 24”.

An 8.5 kw gas generator is on board for your comfort and convenience.

A review of the following information may eliminate delay and unnecessary service calls. If you have any questions as you are operating the boat, please check this manual, and if you still have a question, please contact the marina.

It is our desire to ensure that you have an enjoyable experience on New Melones Lake.

1. HOUSEBOAT OPERATION

1.1 PREPARATION BEFORE STARTING

- ✓ Turn on engine compartment blower for 3-5 minutes before starting engine.
- ✓ Turn off stereo and other equipment so you can hear everyone clearly.
- ✓ Check to be sure that the engine leg (the outdrive) and propeller are lowered into the water.
- ✓ Place a lookout person at the rear end of the boat for visual assistance.
- ✓ **Make sure the area is clear of swimmers. Swimmers should NEVER be in the water when the engine is running.**
- ✓ Start the houseboat engine (see below).
- ✓ Walk around the entire boat and be sure that all ropes are untied and placed on the boat. Dragging ropes are easily wrapped around the prop; this step will prevent this.

1.2 ENGINE STARTING PROCEDURES

- ✓ **Always make sure there is no one in the water when you start your houseboat.**

Make sure the shift/throttle control lever is in the middle (neutral) position.

Turn the key to the first stopping point, to ON (A Buzzer will sound until the engine starts) then press the “Station Select” button until the red light next to the button comes on.

For cold starts: While holding the “station select” button down, move the throttle lever slowly forward and back to the first detent (twice) release “station select” button, then turn the key to “Start”. When the engine starts, release the key.

For warm starts: Move the throttle lever to the neutral position, then turn the key to “Start”, when the engine starts, release the key. If it does not start refer to cold start procedure.

Reduce the throttle to 1500 RPMs to let the engine warm up for about **5** minutes. When the engine is warm, return the throttle to the middle (neutral) position and turn off the blower.

When you move the throttle lever back into the forward or reverse position, the boat will go into gear before the throttle advances.

Idle. The “Set Idle” switch should remain in the “1” position at all times.

More on the ignition switch:

The ignition switch has three (3) positions:

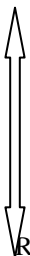
- **Start:** Position is spring loaded and must be held in this position until the engine starts. Never turn the key to the start position if the engine is already running.
- **ON:** After the engine starts and you release the key, it will automatically return to the "ON" position.
- **OFF:** The key can be removed in this position. While it is generally best to leave the key in the ignition at all times, you might want to remove it if young children are on your boat. Then the key should be kept somewhere **close to the helm** in case the boat should need to be started suddenly.

Audible Warning Buzzer

The warning buzzer sounds automatically from the main control console when the ignition is turned on, and also when oil pressure is too low.

- ✓ If this warning buzzer sounds while the boat is under operation, **beach the boat at the nearest safe spot, turn off the engine, and contact the marina for service.** **Operation of the engine with the warning buzzer on will result in severe damage to the engine.**

FORWARD



REVERSE



Throttle Handle

This handle controls the both the gearshift and the power. When you move the handle forward, or heading away from the captain's chair, the boat will shift into forward gear at the first detention. Then as you move the handle forward more, it will increase the throttle. The farther the handle is pushed forward, the faster the boat will go. When the handle is pulled in the reverse position, or towards the captain's chair, at the first detention, the boat will shift into reverse; the farther the handle is pulled towards you the faster the boat will operate in reverse.

1.3 MAIN CONTROL CONSOLE – LOWER HELM

TOGGLE SWITCHES

There are a number of toggle switches on the Circuit Breaker Panel. To the left is the ON position and right is the OFF position.

Wash Down

Turns on the *lake water pump* to the hose bibs located at both the aft and bow of the boat, and the bib located by the hot tub on the upper deck. Water will not flow from these faucets unless this toggle is in the ON position, as the pump will not be operating. Remember that this is lake water and NOT drinking water.

Main Water

Turns on the *lake water pump*. This is the water that is used for washing dishes, bathing, and flushing toilets. **This water is not for drinking water.** In order for this pump to operate, the toggle must be in the ON position. You might want to turn this switch off at night to prevent the pumps from automatically coming on when the water pressure drops, as it might wake you.

Fresh Water

Turns on the pump to the water system that pumps from the *fresh water tank*. This is the water that is used for drinking, cooking, and brushing your teeth. The boat holds 100 gallons. In order for this pump to operate, the toggle must be in the ON position. Fresh water faucets are the smaller silver hook-design faucets located in the bathrooms and at the kitchen sink.

Outlet

Turns on the 110V electrical outlet located on the left of the main Console and runs power from the Generator to the accessory power outlet that the entertainment system is plugged into. In order for power to reach this outlet, the toggle switch must be in the ON position, *and the Inverter switch must be ON.*

Furnace/Heater

This operates the propane heating system, allowing the furnace and related fans to operate. This toggle switch must be in the ON position for the heat to come on. This system is more energy efficient for heating and does not require the generator. (See Section 3.4)

Refrigerator

Operates the refrigerator. This toggle should remain ON at all times for proper operation of the refrigerator.

Spreader Lights

Turns on the yellow lights located on the upper decks. These lights should be turned on when walking about the boat during the night. The toggle switch must be in the ON position to turn these lights on. There may be additional on/off switch located on the top deck on the side of the helm console on some boats. If this is the case, it must also be on for these lights to work.

Lighting

The three light breakers provide power to all lights. These toggle switches must be in the ON position to use the lights.

Inverter

This breaker must be on in order for the Inverter to be used.

OTHER SWITCHES & CONTROLS

The diagram and instructions below explain the horn, Inverter, navigational, and blower switches located here on the main control console.



Horn

Depressing this button will sound the horn. Use the horn for signaling your direction maneuver to other boats when you are backing up.

Inverter

The Inverter converts the electricity from DC battery power to 110-volt AC power to run the stereo and TV/VCR. These accessories operate without use of the generator. Do not try to use both the Stereo and the Television at the same time.

NAV

This toggle switch operates the navigational lights, which must be used while operating the boat during and after dusk. Turn these lights OFF once you have docked the boat for the evening.

A NOTE ON RUNNING LIGHTS (NAV):

Your houseboat needs to be beached 1 hour before dusk.

Running lights are only to be used in extreme emergencies. Please contact New Melones Lake Marina at (209) 785-3300 for assistance and/or service.

Anchor

This toggle switch operates the anchor light located at the stern of the boat. Turn this light ON at all times after dusk, both when the boat is beached and underway. This light is used so that others out on the water after dark can see YOU and it is for your safety, so please use it.

Blower

This toggle switch operates the blowers located in the engine compartment.

- ✓ **THE BLOWERS MUST ALWAYS BE TURNED ON FOR 3 TO 5 MINUTES BEFORE STARTING THE ENGINES** to rid the engine compartment of any fumes that may have accumulated. It is *very important* that you operate the blowers prior to starting the engine.
- ✓ Turn the blower off when the engine has started and is running.
- ✓ **NEVER** turn your blower on **while** refueling.

Lighter

This is a standard accessory power outlet that can be used for the same purposes as the cigarette lighter in your automobile. This plug operates off the engine set of batteries, thus the generator does not need to be running in order for the plug to work.

GAUGES

The houseboat gauges are outlined below according to gauge type:

Fuel Gauge

These gauges, one for the Engine and one for the Generator, indicate the fuel levels. The boat holds about 130 gallons of fuel in two 65 gallon tanks located at the stern on both the port and starboard sides. All boats have a full tank at the beginning of the rental period. To check the fuel level, view the gauges on the dash.

The houseboats run on regular unleaded gasoline. If the generator is ran for one hour it will generally use about ¾ of a gallon of fuel.

All refueling must be done at NEW MELONES LAKE MARINA.



Engine Volt Gauge

The volt gauge pictures above displays the volts on the engine battery and operates when the houseboat ignition is on.



Battery Test Gauges on Circuit Breaker Panel

The Eclipse has three banks of batteries that perform the following functions:
1) the houseboat interior lights 2) to start the engine 3) to start the generator.

The engine volt gauge indicates battery voltage for the selected battery bank, and depending upon the Eclipse you are on, the ammeter will show the charging rate.

Volts - When the boat is idle

It is important that you check the charge on the house batteries approximately every three hours if the boat has been idle.

- ✓ Turn the selection switch to EACH 1, 2, and 3 and look at the needle on the meter. It should read in the green zone for all three battery sets.
- ✓ The engine volt meter should read between 12 to 14 (13.8 is perfect!). If the meter drops to 10 or below, you need to charge the batteries.
- ✓ If you notice your lights are dimming, this is a sign that your batteries are running low. If the charge is low, you may either start the generator or the houseboat engine. It is preferable to start the generator. If you start the houseboat engine, run it at 1200-1500 rpms for 30-60 minutes to recharge the batteries. You can read the status of the recharge for each battery set by using the selection switch and viewing positions 1, 2 and 3.
- ✓ If your boat does not start contact New Melones Lake Marina at (209) 785-3300 for assistance and/or service.

Volts - When the boat is in operation

The normal operating range is from 12 to 14 volts.

- ✓ If the gauge should read below 12 volts during operation, or show a negative rate of charging, please contact New Melones Lake Marina at (209) 785-3300 for assistance and/or service.



RPM Gauge

This meter indicates the speed of the engine. The engine should never be operated in excess of 2,500 RPMs. We recommend a cruising speed of 1800-2200 rpms. This speed allows for the most efficient fuel consumption.

Oil Gauge

The oil gauge should be in the range of 20 to 40 while operating.

Low Oil Light

This gauge ONLY lights when the engine oil is low. If this light comes on, beach the boat at the nearest safe spot, turn off the engine, and contact the marina for service. Failure to do this will result in severe damage to the engine. You may also hear a high pitched whine from the control console.

HI Temp Light

This light ONLY comes on when the engine temperature is too high for safe operation. If this light comes on, beach the boat at the nearest safe spot, turn off the engine, and contact the marina for service. Failure to do this will result in severe damage to the engine.

Temp Gauge

This gauge indicates the temperature level of the engine, and should be checked frequently to ensure the engine is operating at a safe temperature. The range on the temperature gauge should be 0 - 180° while operating.

- ✓ **If this gauge indicates a high temperature, beach the boat at the nearest safe spot, turn off the engine, and contact the marina for service. Failure to do this will result in severe damage to the engine.**



Hours

This gauge indicates the total hours on the boat's engine since the engine was placed in service. This gauge is used by New Melones' service technicians and can be disregarded by rental parties.

1.4 FLYING BRIDGE CONTROLS – UPPER HELM

- ✓ The upper controls are to be used strictly for cruising in the main areas of the lake.
- ✓ **The upper controls should NEVER be used when beaching or docking your houseboat.** Operating the houseboat from the Flying Bridge greatly hampers your vision of the four corners of the houseboat, making docking more difficult. An attempt to do so could result in damage to the houseboat and/or another boat. The

upper and lower controls cannot be operated at the same time, *attempting to do so could result in extensive damage.*

- ✓ The throttle must be in neutral to shift between the upper and lower controls.
- ✓ To move the control of the boat from the lower helm to the upper helm, place the lower control handle in neutral and go to the upper deck. **When at the upper helm flying bridge control console**, press the button for “station select.” Until the red light comes on. The red light shows that the control is operational.
- ✓ To move the controls back to the lower helm, put the throttle at the fly bridge control console into neutral and go to the lower helm, press the “station select” button until the red light comes on. **Always** resume controls at the lower helm for docking or beaching.
- ✓ **Under no circumstances should you attempt to dock the houseboat while driving from the Flying Bridge.**

2. MANEUVERING THE HOUSEBOAT

2.1 STEERING YOUR HOUSEBOAT

Steering your houseboat is different than steering an automobile. The houseboat steers from the rear. This causes the rear of the boat to swing wide, while the engine pushes the boat around a turn.

- ✓ Make sure there is enough room to turn in a tight area.

Unlike a road vehicle, it is not always possible to coast through a turn.

- ✓ Should wind or water current affect the steering, apply throttle to compensate.
- ✓ When making a sharp turn or U-turn, move the steering wheel in the direction you are turning before putting the houseboat in gear, then run the engine up to 2,500 Rpm. After traveling forward a safe distance, put the houseboat in neutral and turn the steering wheel quickly in the opposite direction and then place the throttle in reverse. Continue this procedure until you have made the turn.

The houseboat is equipped with hydraulic steering and it takes approximately five (5) turns from lock to lock.

- ✓ If you are making a turn near obstacles, always have one person at the back of the boat and one person at the front of the boat to provide you with assistance.

2.2 BEACHING

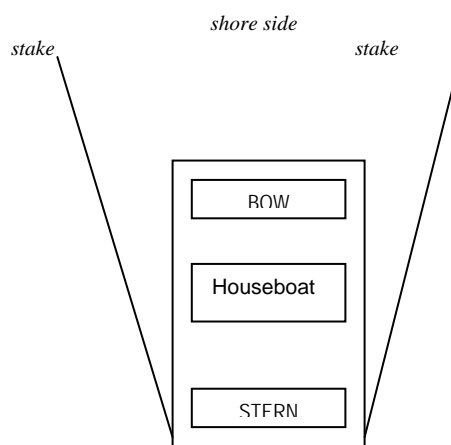
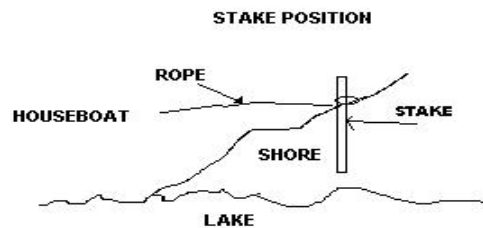
Beaching

You must beach the houseboat every night 1 hour before dusk! There is no anchor provided because the lake is too deep in most places to properly anchor a houseboat. Beaching your houseboat properly, safely, and securely is very important. If you follow these instructions you will find that beaching a houseboat is easy and fun.

- ✓ Choose a spot that is well protected from wind and waves and is away from ROCKS. Because the lake system has a good drop off, most areas that you will park at will be deep enough at the stern (rear) of the houseboat so that it will not damage the propeller. A trial run reasonably close to shore will confirm this.
- ✓ Make sure there are no sharp rocks that will damage the pontoons or hull.
- ✓ Another consideration is the location of the sun. We recommend that you consider a shady spot, if available, for better operation of the refrigerator.

If the area checks out okay, approach the spot you have chosen at the slowest possible speed...900-1000 rpms. Make sure you approach the spot as straight as possible.

- ✓ When the front of the pontoons dig into the ground, leave the motor idling in forward. This will hold the houseboat to the beach while you pound in your stakes and tie up your ropes. (If the wind or waves start to turn the houseboat sideways - with your engine running at low rpm in forward gear, turn your wheel in the same direction the back end of the boat is turning. This will straighten the houseboat out.) Hold in this position (straight) until a crewmember has secured the mooring lines around the stakes. **Make sure that someone is at the helm until the boat is secure.** If your boat should turn sideways on the beach put the throttle in neutral. Try to push the back end of the boat out. Once the back of the boat is far enough out, put the engine in reverse and back up. Approach the beach again as straight as possible. If you are unable to back out because of wind, you can turn the wheel into the beach and put the boat in forward. You will pivot the boat around until it is perpendicular to the shore. You may need a person on shore holding the front corner of the boat against the shore with a rope to perform this maneuver.
- ✓ Your stakes should be pounded in at a 45 degree angle away from both sides of your boat. ***Be sure to pound them in at an angle away from the houseboat with no more than 12-14 inches showing above the ground.*** Pull your mooring lines around the stakes and make a loop knot. Wrap around and knot 3-4 times until the ropes are secure. **It is important to leave as little slack in your ropes as possible, the snugger the better. If one side is too loose, it could result in one side of the houseboat coming up against the shore, which could result in prop and pontoon damage.** After the ropes are secure push the knot as close to the ground as possible.



- ✓ The mooring lines are 'hard tied' to the boat, please **DO NOT REMOVE THEM**.
- ✓ After you have tied up and turned the engine off, make sure your key is in the off position. (A key left in the on position will drain your battery.)

PLEASE NOTE: DO NOT ATTEMPT TO BEACH OR LEAVE THE BEACH IN STRONG WINDS. WAIT IT OUT.

2.3 LEAVING AND RETURNING TO THE MARINA

- ✓ Leaving the Marina the boat will be driven out beyond the breakwater by a NMLM driver, and turned over to the designated captain. When returning to New Melones Lake Marina, please approach breakwater a NMLM driver will board and dock your houseboat. If there are no personnel in sight, call (209) 785-3300. It is a good idea to call ahead.
- ✓ If you are checking out, we recommend that you wash the decks and have your gear packed and ready to go before you get to the marina. This will make unloading your houseboat easier and will get you through the checkout process much quicker.
Your checkout will begin when all of your belongings are off the houseboat and you have completed a general cleaning. A member of our staff will then fuel the houseboat, conduct a walk-through, and call the charges into the marina store. You complete your checkout, and pay for your fuel and any other charges you have incurred in the marina store.

2.4 STORM PROCEDURES

When a storm approaches you have two options:

- ✓ If you are near a safe and protected area before the storm hits, beach the houseboat. Make sure you have your ropes at a 45 degree angle to the side of your boat and your stakes are pounded in secure with no more than 12 inches of the stake showing. Tie up your ropes with as little slack as possible. If there is a cross wind, (if the direction of the wind is towards the side of your houseboat), and the force of the wind is putting unsafe tension on one of mooring lines, place the houseboat in forward gear and apply throttle to relieve the tension.
- ✓ If you are on the lake and the storm hits, stay out on the lake and ride out the storm. A houseboat is a very stable craft and will ride out any storm with a minimum of discomfort. The safest procedure is to head into the storm (with or against the roll of the waves) at a 45 degree angle and at about half speed. Keep the boat from turning sideways into the wind. This will minimize the side to side rocking motion caused by the waves. Continue to ride out the storm until it is calm enough to beach.

2.5 PROPELLER DAMAGE



- ✓ If you should hit anything under the water causing damage to your propeller, slow the boat to idle and then place the throttle in neutral.
- ✓ Try to determine your location by referring to the map of New Melones Lake.
- ✓ Contact New Melones Lake Marina at (209) 785-3300 for assistance and/or service, *giving your location first in case communication is lost.*
- ✓ **DO NOT CONTINUE TO OPERATE THE HOUSEBOAT AS IT COULD CAUSE MAJOR DAMAGE TO THE ENGINE AND/OR OUTDRIVE DAMAGE FOR WHICH YOU WOULD BE HELD LIABLE. INSURANCE DOES NOT COVER NEGLIGENT ACTS OR PROPELLER DAMAGE.**

New Melones Lake Marina guarantees good service to all of our customers, however, due to unforeseen circumstances, mechanical failure does occur periodically.

- ✓ In the event of any malfunction, accident, or damage, we ask that you contact New Melones Lake Marina at (209) 785-3300 for assistance and/or service. Find your location on the New Melones Lake map prior to making the call to expedite your service. All service calls resulting from damage caused by the negligence of the captain and/or his crew will be charged to the “Charter Party” at a rate of \$85.00 per hour plus the damage.

3. APPLIANCES

Note: Most refrigerators have operating instructions on the inside of the door or in the refrigerator compartment. Hot water heaters and heaters usually have operating instructions near pilot lights.

3.1 REFRIGERATOR (Propane)

The refrigerator on your houseboat is propane with an automatic start.

- ✓ Use in LP Gas mode only. The refrigerator has been set at the correct setting by our dock personnel prior to your departure.
- ✓ The refrigerator toggle switch at the main console at the lower helm should be left ON AT ALL TIMES.

Storing Your Food

The food storage compartment is completely closed and unventilated, which is necessary to maintain the required low temperatures for food storage. Air does not circulate in the

refrigerator like it does on most home units. Foods with strong odors, vegetables, salads, etc. should be covered to retain their crispness. The coldest areas in the refrigerator are underneath the cooling evaporator and at the bottom of the refrigerator.

- ✓ **FOR BEST PERFORMANCE, DO NOT OVERLOAD REFRIGERATOR.**
- ✓ **ALL BEVERAGES SHOULD BE KEPT IN ICE CHESTS.**

Please note: For your convenience the refrigerator has been lit and is ready to use.

Use these instructions only if the refrigerator is not functioning.

- ✓ Before starting the refrigerator, be sure the propane tank valves are turned on (propane tanks are located at the back of the boat) and proceed with the instructions below.

Norcold Refrigerators

- ✓ The ON/ OFF button turns the refrigerator on or off. When the refrigerator is off, pressing this button will turn the refrigerator on. Pressing this button for 2 seconds will turn the refrigerator off.
- ✓ Pressing and holding the MODE button will cycle through the three mode choices. Release the MODE button when it stops on LP Gas.
- ✓ The TEMP SET (thermostat) button controls the refrigerator and freezer temperatures. Press and hold the TEMP SET button to select the desired temperature setting. A thermometer shows the temperature setting. Midway between high & low is best. For your convenience, the temperature has been preset on the most efficient setting.
- ✓ If your refrigerator does not have the above-described TEMP SET, it is equipped with a manual TEMP SET. The temperature settings are: COLD on the left and COLDEST on the right. The most efficient setting is 3 and has been preset for you.
- ✓ If gas does not ignite within 30 seconds, the refrigerator's gas valve automatically closes and the operating controls select an alternate energy source. The LED continues to flash until the refrigerator is turned off and then on. If gas does not ignite after several attempts, check your propane tanks. When your propane tanks become empty, call New Melones Lake Marina at (209) 785-3300 for assistance and/or service.

Flame Blow Out

- ✓ If the flame blows out to due windy conditions, try to avoid the wind blowing against the wall where vent outlets are located. If the trouble persists set the temperature to MAX. Make sure to set the thermostat back to MED after conditions have calmed down.

3.2 STOVE & OVEN (Propane)

Stove

- ✓ To light a burner turn the knob that corresponds with that burner to light (counter clock-wise), then turn the "sparker" (clock-wise) to light the burner.
- ✓ The burner should now light and you can adjust the flame by turning the knob to the left or right.

Oven

A pilot light starts the oven but it needs to be re-lit with each use.

- ✓ To light the pilot, which is located in the oven below the bottom shelf, place a lit match just to the left of the main burner. You may have to look hard to find it, but it is just below the main grill. (A member of the dock staff will point it out to you during orientation.)
- ✓ Turn the oven control knob to the "pilot on" setting and hold the match to the pilot until it burns on its own. Close the door and turn to the desired temperature.
- ✓ If the pilot is left lit, it causes unnecessary use of propane.

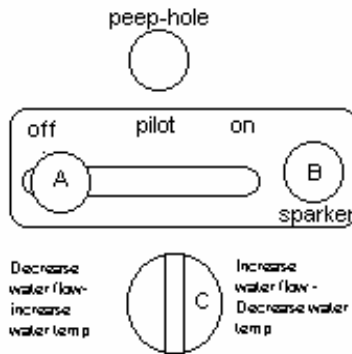
NOTE: You may think something is wrong because the burner has not fired up. You can relax. You won't gas yourself. The delay ignition is normal due to a thermo-switch safety valve which must be warmed up by the pilot before it will light. It is there for your protection. If the burner does not fire within 5 minutes, shut off gas, open oven door and wait 5 minutes, then repeat the above procedure.

3.3 HOT WATER HEATER

The Eclipse houseboat is equipped with either a 10 gallon hot water heater or a demand type hot water heater. There are two pilot lighting procedures outlined below; the instruction set you'll use will depend on the houseboat model you are on.

NOTE: Your hot water heater has been lit for you. These instructions are to be used only if the water heater blows out.

If you have a demand type hot water heater you will use Instruction set A. (look at the back of the boat for the hot water control panel diagrammed below). Since the water heater functions on an "on-demand" basis, it will only heat water as it is being used. The below picture corresponds with the controls on the water heater.



Instruction Set A - to light your hot water heater should it blow out:

- ✓ Slide knob A to the OFF position and wait 5 minutes. Then slide knob A to the Pilot position, and look in the peephole.
- ✓ Push and hold in knob A and after 5 seconds push in the sparker (knob B) while still holding in knob A; release knob A when the pilot burns on it own. The pilot should now be lit, if not repeat the procedure.
- ✓ Turn knob A to the ON position.
- ✓ Knob C is used to adjust the temperature of the water. To increase the flow of water and decrease the temperature, turn the knob to the right. To decrease the flow of water and increase the temperature, turn the knob to the left.

If you have a tank style hot water heater, you will use Instruction Set B.

Instruction Set B - to light your hot water heater should it blow out:

Look for the hot water switch located at the lower helm control console. If the light is on, this is a WARNING that the pilot is out. To reset it, turn the switch off for a moment then back to on, and the pilot will automatically re-light. You do not need to run the generator for hot water.

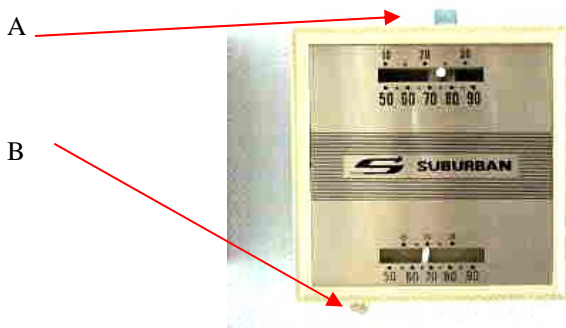
3.4 HEATER/FURNACE

The Eclipse houseboat is equipped with two heaters, both a propane heater and a heat pump.

Propane heater

The propane heater is quieter than the heat pump as it does not require the generator to operate. It runs off battery power and propane gas.

- ✓ Turn the heater furnace breaker switch to the ON position on the main Circuit Breaker Panel.
- ✓ Go to the thermostat labeled Suburban and set the temperature desired by moving the lever (A).
- ✓ Push the lower lever (B) to the ON position (to the right).



Heat Pump

The heat pump will result in quicker warming of the houseboat cabin, but requires the use of the generator. The heat pump thermostat is diagrammed below:



- ✓ Make sure all switches on the thermostat are OFF.
- ✓ Turn on the generator and let it run for 5 minutes.
- ✓ Go to the top thermostat labeled Rheem and set the temperature desired by moving the top lever (A) to the numbers on the heating gauge (left side).
- ✓ Move switch (B) to HEAT setting.
- ✓ Move switch (C) to ON or AUTO.
- ✓ Move switch (D) to Normal heat (blue) or Emergency heat (red).
- ✓ To shut off, turn the thermostat 'system' switch (B) to OFF.
- ✓ Wait 5 minutes for the fans to turn off. Feel the vent above the sink to see if air is still coming out. **DO NOT TURN THE GENERATOR OFF UNTIL THERE IS NO AIR COMING FROM THE VENTS.**

3.5 BBQ

Your houseboat is equipped with a propane BBQ on the front deck.
To light:

- ✓ Open the lid of the BBQ. **Never light a BBQ with the lid closed, serious injury can result. Keep arms and face away from the top of the BBQ while lighting.**

- ✓ Turn temp knob to high and press igniter. If it does not light a match can be used through the hole in side.
- ✓ The BBQ should ignite. If the BBQ will not start, check your propane tank. If your tank is empty contact New Melones Lake Marina at (209) 785-3300 for assistance and/or service. There is no charge for refilling the propane tanks.

4. WATER SUPPLY

4.1 FRESH WATER

There is approximately 100 gallons of fresh water on your houseboat. There is no gauge to check the level, however, it is very rare for a houseboat party to run out of fresh water.

Each sink has a separate faucet for fresh water. The small, silver hooked faucets are for fresh water. The fresh water pump must be on to operate faucet (turn the fresh water switch to ON at the main control console).

- ✓ If you need to fill up your fresh water tank during your trip, return to New Melones Lake Marina and let one of our dock staff know. There is no charge.

4.2 LAKE WATER

The lake water faucet is the main faucet in the kitchen sink and in your bathroom sink and shower. The lake water pump must be on to operate all lake water faucets and the shower.

- ✓ **Make sure you turn the lake water pump off when your boat is underway.**

If your water pump is left on while your boat is underway, the intake hose may become full of air or cause other problems.

- ✓ If you are unable to get any water from your faucet, first make sure the water pump switch is on. Then check to see if the pump is working. You will be able to hear it working when you turn on the faucets. If it is running, turn on all the lake water faucets in your houseboat. You should get spurts of water out of the faucets until they run full out again. Turns the faucets off.
- ✓ If your pump is still not running the water pump *may* have burnt out. Contact New Melones Lake Marina at (209) 785-3300 for assistance and/or service.

Please make sure to use biodegradable soaps in your shower and use the kitchen dish soap we have supplied. **Please do not put any grease down the sink, this will clog the holding tank.** Place grease in a container (an empty coffee can works well) and place in the trash compactor.

4.3 WATER FOR SLIDE

The waterslide operates off of the ‘Washdown’ pump, so this breaker switch must be ON at the main circuit breaker panel for the slide to operate. Turn the valve at the top of the slide to on, and lake water will spray over the slide. (Some boats have an additional on/off switch next to the washdown hose bib on the rear deck, which must be turned on as well).

5. BATHROOM FACILITY

5.1 TOILET

Your toilet pumps lake water into the bowl, then when flushed goes into a holding tank (labeled black water). These toilets are not like the toilets used in your home. There must be lots of water in the bowl before you flush it. Make sure to hold the pedal down long enough to wash everything down. Make sure the pedal is back to its original position so that it doesn’t continue to run and fill your holding tank with water.

- ✓ After each flush, lift up on the pedal to put water into the bowl, this will seal the holding tank system and prevent odors from escaping.
- ✓ All of our houseboats are equipped with sewage holding tanks that are pumped out at the end of each cruise. Marine toilets and the pump-out systems do not accept anything other than natural, organic waste. **Advise your crew and watch your children so that no sanitary napkins, tampons, matches, gum, or other hard foreign objects get into the toilet. The rule of thumb is: DO NOT PUT ANYTHING INTO THE TOILET UNLESS YOU HAVE EATEN IT FIRST!**
- ✓ Should your toilet become plugged during your cruise, fill a bucket with clear water and dump down the toilet holding the pedal down. If this does not work, bring the houseboat back to the Marina. There the houseboat will be pumped-out at no charge to you.

The holding tank is large enough to last a week with 8-10 people using the facility correctly. Due to all different kinds of circumstances, there is a remote possibility that you will need to get your sewage pumped-out at sometime during your cruise. If you wish to check the level of the holding tanks, go to one of the restrooms and hold the toilet foot lever down and look down through the opening (a flashlight will help).

DO NOT open the covers diagrammed at left.



5.2 CHEMICALS

Chemicals are added to the septic holding tank after each pump-out.

- ✓ You do not need to add any chemicals during your trip.

5.3 TOILET PAPER

All of our boats are supplied with marine grade 1 ply toilet paper.

- ✓ **Only use the toilet paper supplied on our boats. Ask the dock or store personnel for more if needed. It is provided at no charge.**

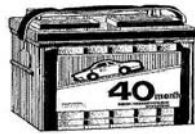
Other types of toilet paper can cause plugging, resulting in returning early to New Melones Lake Marina for a pump-out.

5.4 SHOWER

The shower is similar to your shower at home. The waste from the shower goes into a (gray water) holding tank.

- ✓ Keep showers short.

6.ELECTRICAL SYSTEM & COMPONENTS



6.1 BATTERIES

Your houseboat is equipped with (2) 12 volt batteries, which are located in the engine box at the back of the houseboat. When your engine or generator are running, these batteries will recharge. It is important to recharge your batteries when your houseboat has been sitting for more than a few hours and you have been using any of the lights, entertainment system, etc. Dimming lights are a good indication that the batteries are low.

Conserve battery power:

Turn your lights off when not in use.

Turn the radio and all other components off when you retire for the evening.

However, **DO NOT** turn the refrigerator off! (It runs on propane, and has been set by marina personnel to operate correctly.)

- ✓ Before you retire for the evening, we recommend you start your generator. This should be done for approximately 30-60 minutes to recharge the batteries so that you have a fresh start in the morning.

6.2 110 Volt MAIN BREAKER BOX

Located in the hallway and/or at the back of the houseboat. If a component will not work this should be the first place you look.

6.3 LIGHT SWITCHES

The light switches are located in two places; both on the lights themselves and on the walls of the boat.

Note: The following components are part of the entertainment system and are powered through the INVERTER switch on the lower helm control console. Make sure to run the generator every 3 to 4 hours when in use.

6.4 FLYBRIDGE CASSETTE STEREO

The speakers are located on the Flybridge. The breaker switch for the upper stereo can be found on the lower helm control console and is labeled “Accessories”.

6.5 CD PLAYER/STEREO

The CD/Stereo player uses speakers mounted on the houseboat and in some cases there are speakers for the CD player on the top deck.

6.6 TV/VCR

Each of these components has its own remote. Refer to the Inverter power instructions located in section 6.7.



6.7 GENERATOR POWER

The Generator provides all 110V power for appliances and accessory plugs. The above pictured power switch is located either in the hall toward the back of the boat or on the main control console below the throttle control. The controls for the generator are located in the back of the houseboat.

- ✓ To start your generator, first turn on the blower for 3 to 5 minutes.



- ✓ Then turn the Power Selector Switch to “Off”
(located either to the right of steering wheel on lower helm or at electrical panel in hallway)
- ✓ Push and hold down the ON switch and then do the same for the START switch. Once the generator has started release START switch and hold ON switch for 10 sec. then release. Turn the blower off.
- ✓ **The generator should be run for 5 minutes before any accessories are run.**
- ✓ Then turn the Power Selector Switch to “Ships Gen”



- ✓ Before stopping the generator, make sure all appliances running from its power and power selector switch are OFF.
- ✓ To stop the generator hold down the STOP switch until it has come to a full and complete stop.

6.8 MICROWAVE, TRASH COMPACTOR, DISHWASHER

The generator must be running before you can use any of these appliances. There is a “compactor/dishwasher” switch in the galley below the sink or on the wall behind the stove. Only one of these appliances can be used at a time depending on the position of the switch.

6.9 INVERTER SYSTEM

The Inverter power switch, located on the lower helm control console, must be on when using any components in the entertainment system. The Inverter converts the power so that the entertainment system, which is wired for 110 power (standard in U.S. homes), can operate from battery power without running the generator. See the troubleshooting section at the end of this manual for further information. It is recommended that you use the generator because the inverter system will discharge the house batteries at a higher rate.

WARNING:

When operating the TV/VCR, stereo, CD player etc. start the generator every 3 to 4 hours. When using components or accessories that require heating (hot tub, microwave, blow dryers, etc.) the generator must be on.

6.10 AIR CONDITIONING

To run the A/C, the generator must be run for at least 5 minutes before the A/C is turned on and should remain running during that time.

- ✓ Make sure all switches on the thermostat are OFF.
- ✓ Turn the switch on the Rheem thermostat to auto and select the desired temperature on the right side of the thermostat labeled “cooling”. There is a 2-7 min. delay for it to start cooling.
- ✓ To shut off, turn the thermostat ‘system’ switch (B) to OFF.
- ✓ When you are done with the A/C, turn the system switch to off and **wait until the fan turns completely off** (about 5 minutes). You can check the fan operation by holding your hand under the vent above the kitchen sink. **DO NOT TURN THE GENERATOR OFF UNTIL THERE IS NO AIR COMING FROM THE VENTS.**

7. HOT TUB

The hot tub is generally filled with water upon your departure. You may want to freshen the water if you are using it frequently.

7.1 FILLING & DRAINING

The Hot tub has been filled for you. Should you want to drain and refill the hot tub use these instructions. Do not place any chemicals in the water, since it drains into the lake and chemicals could contaminate the water.

Here is an explanation of the valves and switches:



To Drain:

- ✓ Look under hot tub. Open the cabinet containing the hosing to the unit which is on the starboard side of the boat. Turn the large red valve so that it is parallel with the drain pipe, which opens the drain gate valve. (The blue, green, red, or black handle fill valve can be **either** open or closed for draining, it does not effect this operation.) The hot tub will then drain (it generally takes about 10 minutes to drain completely).

To Fill:

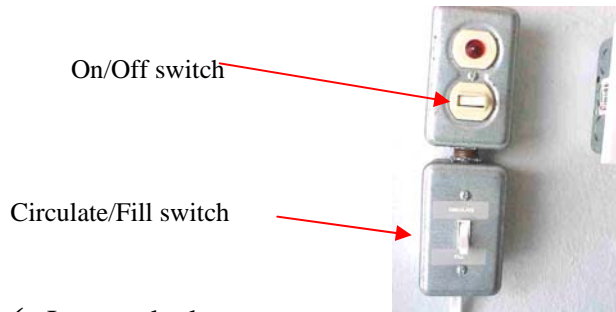
- ✓ When filling the hot tub the houseboat must be stationary and in deep water (preferably at the center of the lake), and the generator must be running.
- ✓ Make sure the power switch for the hot tub is off and the fill/circulate switch is turned to fill.
- ✓ Make sure that the heater for the hot tub is turned off.
- ✓ The valves to fill and drain the hot tub are gate valves; open is parallel to the pipe and closed is perpendicular to the pipe.
- ✓ To fill the hot tub, turn the red gate valve (drain valve) so that it is **closed**, perpendicular to the piping. Turn the fill valve (blue, green, red or black handle) to the **OPEN** position, parallel with the piping.
- ✓ Fill the tub to within 6 inches from the top on the tub (this will take approximately 30 minutes or more).
- ✓ After the tub has filled, close the fill valve.

7.2 HOT TUB HEATING & OPERATION

Turning the system ON:

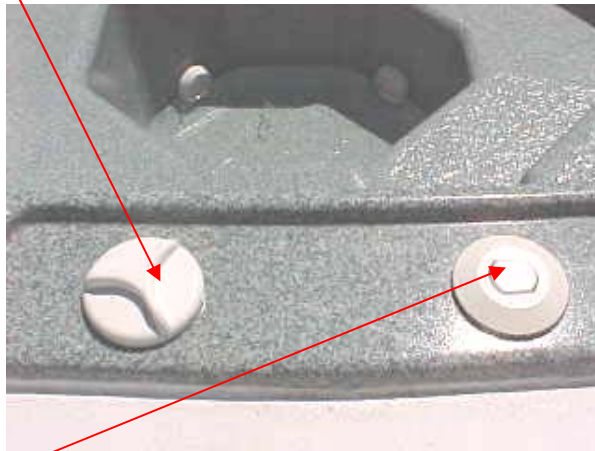
- ✓ **The generator must be on to operate the hot tub.**
- ✓ Locate the On/Off and Circulate/Fill switches in the cabinet directly underneath the hot tub on the starboard side of the boat.
- ✓ Turn the On/Off switch to ON.
- ✓ Turn the Circulate/Fill switch to **circulate**. **The hot tub will not heat if this is not done.** The water in the Hot Tub should start to circulate. If it does not there is air in the pipes. In that case, with the pump on, turn the red handle drain valve so it is in line with the pipe (open). After a few seconds close the

red handle and the water should circulate. If not, repeat the process. The fill valve must be closed for the Hot Tub to operate.



- ✓ Locate the hot water heater in the second cabinet that is located directly underneath the hot tub on the Port side of the boat.
- ✓ The hot water heater should be lit; if not, or if the pilot blows out during your trip, turn the main heater switch to OFF.
- ✓ After waiting 5 minutes follow the lighting instructions on the heater. Turn the temperature dial to cool and turn the main heater switch ON. Once the heater ignites turn the temperature dial to HOTTEST.
- ✓ The water will heat FASTER if the circulation is set to the SLOWEST position. It should take about 1 ½ hours to heat the water. Adjust the heat on the heater for comfort by turning the knob on the front.

This dial on the hot tub control panel adjusts for the air flow and thrust of water from the jets. Remember that slower circulation will heat the water faster.



This is the push button toggle switch for the two speeds for air flow, high and low.

Turning the system OFF:

You must turn the system OFF in this order-

- ✓ Turn hot water main heater switch to OFF.
- ✓ In the cabinet underneath the hot tub, turn Circulate/Fill switch to OFF.
- ✓ Turn the On/Off switch to OFF.

To reset the system:

- ✓ In the cabinet underneath the hot tub, turn the Circulate/Fill switch to OFF.
- ✓ Turn hot water main heater switch to OFF.
- ✓ Flip the breaker.
- ✓ Turn the Circulate/Fill switch to ON.
- ✓ Turn hot water main heater switch to ON.

8. NEW MELONES LAKE

8.1 MAP OF NEW MELONES LAKE

A map of New Melones Lake has been provided for you.

8.2 RECOMMENDED BEACHING SITES

There are several beaching areas for mooring overnight. The following list is of only a few of these locations. We recommend that you tour the lake and choose your mooring spot. Directions for specified locations are based on the marina as a center.

West side of lake

- Black Bart Cove

North side of lake

- Vonich Cove
- Angels Cove
- Angels Arm (several locations)

South side of lake

- Bear Cove
- Peoria Cove
- Long Gulch Cove

South-East side of lake

- Mormon Creek

North-East side of lake

(these areas are not recommended in late spring, early summer)

- Coyote Arm

- Parrots Ferry Bridge
- South Fork Stanislaus

East side of lake

- Carson Cove
- Hwy 49 Bridge
- Devils Cove

8.3 BEACHES NOT RECOMMENDED

We do not recommend mooring in an area with a greater shore angle than 45 degrees to the water. There is also no boating allowed in the swim areas in Angels Cove and in Tuttletown. These are *no boating areas* and too shallow for a houseboat.

8.4 NEW MELONES RULES & REGULATIONS

1. Camping is permitted only in designated areas.
2. Quiet hours are between 10:00 p.m. and 7:00 a.m.
3. Fires must be confined to grills provided.
4. Shoreline camping is prohibited.
5. All pets must be on a 6' leash or caged at all times within the recreation area.
6. The use of audio devices in such a manner that others are disturbed is prohibited.
7. Skateboard and roller skates/blades are prohibited.
8. Destruction, defacement, or removal of public property is prohibited.
9. Campfire permits are required for any fire outside of the camping and picnic areas.
10. Wood gathering is restricted to dead and down trees.
11. Loaded fire arms, explosives, and fireworks are not permitted within recreation area.
12. **NO FUEL STORAGE ON BOARD.**

8.5 POINTS OF INTEREST

There are many beautiful places on New Melones Lake to see. Here are a few that you won't want to miss.

- Peoria Cove- Ski slalom course
- Parrots Ferry Bridge - Water Fall (north side)
 - Natural Bridges (if you like to hike)
- Morehouse Bar
 - Marble Quarry
 - Ditches Mine

8.6 FOOD SERVICE, STORE, & FUEL

New Melones Lake Marina has a convenience store with snacks, bait and tackle, beverages, ice cream, frozen foods, a deli for sandwiches and pizza, unique summer apparel, and gas. We are your one stop market on the water.

9. SAFETY EQUIPMENT AND SAFE BOATING PRACTICES

9.1 DRINKING & BOATING

More than 50 percent of recreational boating fatalities, injuries, and property damage in California are alcohol related. Just as with a car, it is illegal to operate a boat when your ability to do so is impaired by alcohol or your blood alcohol concentration exceeds 0.08%. Be safe: save your celebrating until after you've finished enjoying a day on the water or use a designated driver. Tuolumne and Calaveras county Sheriffs patrol New Melones Lake and enforce the California boating laws. A summary of the laws are as follows:

- Operating a vessel while under the influence of alcohol and/or drugs is a misdemeanor and could carry a penalty of one year in the county jail, or a fine not to exceed \$2,000 or both.
- Operating a vessel under the influence of alcohol and/or drugs and causing injury to another person may be ruled a felony by the courts and could carry a penalty of one year in prison and a fine of up to \$5,000.
- Operating a vessel under the influence of alcohol and/or drugs and causing death to another person is a felony and could carry a penalty of up to 10 years in prison.
- A person arrested for operating a motorboat under the influence may be requested to take a blood, breath, or urine test to determine blood alcohol concentration (BAC). Refusal to take the test may result in increased penalties (fine, jail, or both) if convicted. A BAC of 0.08% presumes intoxication, a BAC of 0.05% but less than 0.08% may be used with other evidence to determine intoxication.
- A person under the age of 21 may not operate any motorized recreational vessel with a BAC of 0.01- 0.05%. The fine for this ranges between \$100 and \$250.
- Previous alcohol or drug-related convictions of vehicle and vessel operators can be used to enhance penalties for person convicted of subsequent vehicle or vessel violations.
- A person convicted of operating a vessel under the influence of alcohol and/or drugs may be ordered by the court upon first conviction, and must be ordered by the court upon a subsequent conviction within seven years of a previous conviction to take and pass a boating safety course.
- If you are convicted of operating a **vessel** while intoxicated, The Department of Motor Vehicles may suspend or revoke your **vehicle** driver's license. The duration of suspension could range from 6 months to 5 years, depending upon the number and type of vehicle and/or vessel violations accumulated.

9.2 LIFE JACKETS

Your houseboat is equipped with as many life jackets as it has sleeping capacity. The life jackets are stored underneath the lower helm captain's bench seat and under the small couch near the entertainment center.

Children under 7 years of age and/or under 90 pounds are required by law to have their own, or one can be obtained at the marina prior to departure. They must wear them at all times while the houseboat is underway.

- ✓ Check on their location and sizes prior to departure.
- ✓ If you use the life jackets, make sure they are dry before returning them to their storage area. Make sure to always return them so that they can be found easily in the event of an emergency. Make sure all children wear their life jackets while the houseboat is underway.
- ✓ **KEEP CHILDREN OFF THE DECKS OF THE HOUSEBOAT WHILE UNDERWAY.**

9.3 SAFE BOATING PRACTICES

Always remember “SAFETY FIRST”... When it comes to making boating an enjoyable experience, there’s nothing like peace of mind.

- ✓ Never drink and drive. It is against the law and can put your crew in a very dangerous situation.
- ✓ The houseboat should always be beached or docked at least 1 hour before dusk. Check distances to give yourself enough time to get to your destination for the day.

9.4 BOATING TERMS & KEYS TO DEFINITIONS

The following are some basic boating terms and definitions:

Aft-in, near, or toward the stern or rear end of the boat

Bow-the forward or front end of the boat

Breaker Box-the electrical panel containing the electrical breakers for the boat. There may be more than one breaker box.

Fenders-portable bumpers hung over sides to protect the hull from contact with a dock or other boat

Fly Bridge Console-the secondary control panel located on the upper deck of the houseboat

Flying Bridge-the upper deck of the houseboat

Forward-toward the bow of the boat

Galley-kitchen aboard a boat

Give-away vessel-keeps out of the way of oncoming boat when crossing paths with that boat

Head-the toilet aboard the boat or the bow area of the boat

Lower helm-the captain's seat and control panel on the bottom deck of the houseboat

Main Control Console-the control panel located on the bottom deck of the houseboat

PWC-Personal Watercraft. Term may be applied to jet skis, waverunners, SeaDoos®, and other one to three person personal watercraft.

Port Side-the left side of the vessel when looking toward the bow (4 letters each-port and left)

Stand-on vessel-the boat which, according to the rules of the road for two approaching vessels, has the right-of-way and is obligated to maintain course and speed. It holds its course when crossing paths with another boat

Starboard Side-the right side of the vessel when looking toward the bow

Stern-the back end of the boat or aft part of the boat

Under way-a boat is under way when it is neither anchored, moored, nor aground. It need not be in motion to be under way

Upper helm or Upper bridge-the captain's seat and control panel on the top deck of the houseboat

Wake-a track a vessel leaves behind it. A five (5) mile per hour zone indicates that NO WAKES are allowed.

10. FIRST AID & EMERGENCY PROCEDURES

Please Note: **In all emergencies call 911.** If you do not know CPR or cannot attempt it out of fear, New Melones Lake Marina has CPR certified staff members.

11. RETURNING TO THE MARINA

11.1 APPROACHING THE MARINA UPON RETURN

New Melones Lake Marina personnel will assist you returning to the marina.

- ✓ When approaching the breakwater, call (209) 785-3300 if there are no personnel in sight.
- ✓ Boats are generally due back by 9:00 a.m. the day of return.
- ✓ The boat will be fueled and you will be charged for the amount of fuel consumed.

12. TROUBLE SHOOTING & SERVICE NEEDS

12.1 IF SERVICE IS NEEDED

When you experience problems with the motor, generator, hot tub or appliances, please first read the instructions for the particular item in question and review the troubleshooting list below. This will generally help you solve the problem yourself. However, if the problem still persists, NEW MELONES LAKE MARINA has personnel who will come to assist you. Calls are answered on a first come, first served basis, and response time is generally within one-half hour.

- ✓ To assist us in reaching you as quickly as possible, please look at your New Melones Lake map and try to determine your location before calling the marina. This will expedite your call and enable us to reach you more quickly.
- ✓ Due to the unreliability of cell phone service around the New Melones Lake, **when you call for service, FIRST STATE THE NAME OF YOUR BOAT AND LOCATION, THEN describe your problem.** This way, if the call is terminated and cannot be reconnected, we will know where to find you and can answer your call quicker.

12.2 TROUBLE SHOOTING

Below are some of the more common problems that you might experience while operating your houseboat:

Alarms – the houseboat is equipped with low battery monitors, smoke alarms AND propane leak detectors.

Propane leak detectors – If you hear a high beeping noise around your refrigerator, it might be the propane leak detector located on near the floor in front of the refrigerators (propane gas settles to the floor).

- ✓ **SHUT OFF ALL APPLIANCES**
- ✓ **DO NOT SPARK ANYTHING**
- ✓ **DO NOT START ANY ENGINES OR GENERATORS**
- ✓ **DO NOT LIGHT OVEN OR STOVE**
- ✓ **DO NOT LIGHT CIGARETTES**
- ✓ **OPEN ALL WINDOWS**
- ✓ **CALL NEW MELONES LAKE MARINA FOR ASSISTANCE**

Low battery monitor - If you hear a constant beep from the refrigerator, or a constant tone from the inverter under the main console, your batteries are most likely low. Check the battery banks at the lower helm control console. Start either your generator or engine. **It is wise to check your battery levels before retiring for the evening to avoid this beep from waking you in the middle of the night.**

Horn Speakers – A high pitched whine emitted from the lower helm control console. The horn sounds automatically from the control console when the ignition is turned on, but **also** when oil pressure is too low.

- ✓ If this horn sounds while the boat is under operation, **beach the boat at the nearest safe spot, turn off the engine, and contact the marina for service. Failure to do this will result in severe damage to the engine.**

Generator

Won't start –

Check the reset button above the starter for the generator on the left rear side inside the generator compartment.

Hard starting –

Let the generator sit for a 15 minutes if you have been repeatedly attempting to start it. Hold the black 'ON' button down for a few seconds then put the white 'START' button down for just a few seconds.

After about 5 minutes, try again. If problem persists, you may be running low on fuel. Do not repeatedly try to start the generator as you may burn up the starter, call New Melones Lake Marina for assistance.



No 110 Volt service – Check the main breaker switch panel, generally located in the back hallway of the boat, **while the generator is running.**

No 12 Volt Service – Check the DC breaker switch arm located on the right side wall of the engine compartment. A little black box with a red button. Raise the arm at the bottom of the box to reset.

Stereo and Speakers

Will not operate – 1) Check the switches to the Inverter on the lower helm control console, make sure it is ON. 2) Check the voltage level of the house batteries, they should read between 12 to 14 (13.8 is perfect!), if lower, charge batteries with generator.

Engines

Hard starting –

When cold: while in neutral move the throttle hand to the forward position. Turn the ignition key on, and when started QUICKLY move the throttle back to the neutral position.

When warm: before attempting to start, pump the throttle hand forward 2 to 3 times, then start.

Motor turns but won't start – check the volt gauge for battery strength reading. To prevent burning up starter, DO NOT HOLD KEY ON FOR MORE THAN 5 SECONDS AT A TIME.

Always make sure the boat is clear of swimmers BEFORE starting the engines.

Also refer to the engine starting procedures section 1.2

Dead Batteries

After checking to see if the 12V D/C breaker switch, located on the side wall of the engine compartment, is on, the batteries can be re-charged by running the generator. The house batteries (there are two) will re-charge from the generator within one (1) hour if the 12V system is not being used at the same time (we recommend you turn off the stereo, TV, excess lights, etc.).

Water

Shower - No water is coming out of the showerhead, but all faucets are functioning properly. There is a valve on the showerhead, adjust it to the OPEN position.

No water from lake water faucets – Check the lake water breaker switch on the lower helm control console. It should be in the ON position. If problem persists, turn on ALL the faucets in the houseboat until water starts coming out. If problem still persists, turn off the faucets and call New Melones Lake Marina.

No water from fresh water faucets – 1) Check the fresh water toggle switches on the lower helm control console. They should be in the ON position. 2) Turn on several

faucets, if they are all dry, you may be out of fresh water. Call New Melones Lake Marina for further instructions and assistance. 3) The water pumps do not run continually, only when they are in use. However, if you can hear the pump running but no water is coming out of the faucets, please call the Marina immediately as you may have a leak in the water line. (A continuously running water pump may indicate a leak.)

Toilet

Toilets won't flush – Visually check toilet bowl trap to be sure it is not plugged with paper and/or debris. You can clear the trap by pressing on the foot valve to open the trap. Holding tank level – If the holding tanks are full, the grey water will back up into the base of the shower. Pumpouts must be done at New Melones Lake Marina, proceed as soon as possible to the Marina if your holding tanks are full. The tank level can be visually examined by opening the toilet trap with the foot valve and looking down into the tank below.

Lights

Upper deck spreader light – there is a switch on the upper helm control console on the side of the console, turn it to ON.

Cabin light fixtures do not light – check the switch located on the side of each light fixture, they may also be turned on/off individually.

Refrigerators

Not cold – The refrigerators are set at the marina and require 24 hours to adjust to new settings if changed. They will not work efficiently if they are overloaded and/or opened frequently. The refrigerators run on propane fuel, and do not operate in the same manner as you experience with your home refrigerator. *We strongly recommend that you store all canned and bottled beverages in the large ice chests provided.* Also, please do not expect the freezer to freeze a warm item.

Breaker box switches:

Microwave

The breaker for the microwave is located in the breaker box in the hallway towards the stern (rear) of the boat.

Galley

The breaker for the galley plugs is located in the breaker box in the hallway towards the stern (rear) of the boat. There may be a reset switch on the plug plate for the GSI.

Appliances/Accessories

The breakers for the appliances are located in the breaker box in the hallway towards the stern (rear) of the boat.

Hot Tub

The breaker for the hot tub is located in the breaker box in the hallway towards the stern (rear) of the boat.

Have a safe trip and thank you for choosing New Melones Lake!

13. ADDENDUM

This particular boat you are aboard has the following differences from the information provided in this *standard manual*. ***Follow the instructions on this Addendum for the equipment aboard your boat and ignore the previous instructions provided in the standard manual.***

13.1 HOT TUB - type B

The hot tub is generally filled with water upon your departure. You may want to freshen the water if you are using it frequently.

FILLING & DRAINING

The Hot tub has been filled for you. Should you want to drain and refill the hot tub use these instructions. Do not place any chemicals in the water, since it drains into the lake and chemicals could contaminate the water.

To Drain:

- ✓ Look under hot tub. Open the cabinet containing the hosing to the unit which is on the starboard side of the boat. Turn the large red valve so that it is parallel with the drain pipe, which opens the drain gate valve.

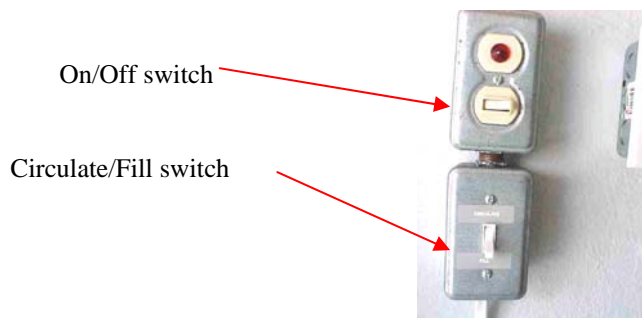
To Fill:

- ✓ When filling the hot tub the houseboat must be stationary and in deep water (preferably at the center of the lake), and the generator must be running. Turn the power switch for the hot tub on and the fill/circulate switch to fill.
- ✓ Make sure that the heater for the hot tub is turned off.
- ✓ The valve to fill and drain the hot tub is a gate valve; open is parallel to the pipe and closed is perpendicular to the pipe.
- ✓ To fill the hot tub, turn the red gate valve so that it is open, parallel to the piping.
- ✓ Fill the tub to within 4-6 inches from the top on the tub (this will take approximately 30 minutes or more).
- ✓ After the tub has filled, close the drain/fill valve.

HOT TUB HEATING & OPERATION

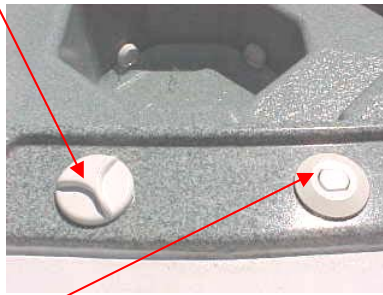
Turning the system ON:

- ✓ **The generator must be on to operate the hot tub.**
- ✓ Locate the On/Off and Circulate/Fill switches in the cabinet directly underneath the hot tub on the starboard side of the boat.
- ✓ Turn the On/Off switch to ON.
- ✓ Turn the Circulate/Fill switch to **circulate**. **The hot tub will not heat if this is not done.** The water in the Hot Tub should start to circulate. If it does not there is air in the pipes. In that case, with the pump on, turn the red handle drain valve so it is in line with the pipe (open). After a few seconds close the red handle and the water should circulate. If not, repeat the process. The drain/fill valve must be closed for the Hot Tub to operate.



- ✓ Locate the hot water heater in the second cabinet that is located directly underneath the hot tub on the Port side of the boat.
- ✓ The hot water heater should be lit; if not, or if the pilot blows out during your trip, turn the main heater switch to OFF.
- ✓ After waiting 5 minutes follow the lighting instructions on the heater. Turn the temperature dial to cool and turn the main heater switch ON. Once the heater ignites turn the temperature dial to HOTTEST.
- ✓ The water will heat FASTER if the circulation is set to the SLOWEST position. It should take about 1 ½ hours to heat the water. Adjust the heat on the heater for comfort by turning the knob on the front.

This dial on the hot tub control panel adjusts for the air flow and thrust of water from the jets. Remember, slower circulation will heat the water faster.



This is the push button toggle switch for the two speeds for airflow, high and low.

Turning the system OFF:

You must turn the system OFF in this order-

- ✓ Turn hot water main heater switch to OFF.
- ✓ In the cabinet underneath the hot tub, turn Circulate/Fill switch to OFF.
- ✓ Turn the On/Off switch to OFF.

To reset the system:

- ✓ In the cabinet underneath the hot tub, turn the Circulate/Fill switch to OFF.
- ✓ Turn hot water main heater switch to OFF.
- ✓ Flip the breaker.
- ✓ Turn the Circulate/Fill switch to ON.
- ✓ Turn hot water main heater switch to ON.